

Brompton Headset



RIDEA

STEP 01

Grease the upper cup.



STEP 04

Make sure than the upper cup is properly installed.



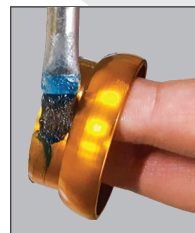
STEP 02

Grease the head tube.



STEP 05

Grease both lower cup and lower part of the head tube.



STEP 03

Use a bearing cup press to install the upper cup.



STEP 06

Use a bearing cup press to install the lower cup.



Professional frame preparation and headset installation are highly recommended

STEP 07

Make sure than the lower cup is properly installed.



STEP 08

Grease and install the crown race.



STEP 09

Lower bearing tapered part faces upwards.



STEP 10

Upper bearing tapered part faces downwards.



STEP 11

Use a 36 mm headset wrench to thread the adjusting ring. Do not tighten it too much.



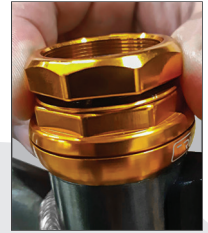
STEP 12

Place the spacer on top of the adjusting ring.



STEP 13

Thread the locking ring.



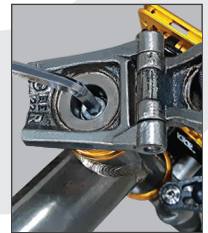
STEP 14

Use two 36 mm headset wrenches to tighten the locking ring and the adjusting ring.



STEP 15

Tighten the expander cone bolt.



STEP 16

The installation is complete.

