

Suspension Kit

Birdy only



RIDEA GROUP limited
www.rideabikes.com

MING SUEY PRECISION INDUSTRIAL CO., LTD.
Tel.: +886 04 771 5639 Fax: +886 04 772 0539
No. 53-63, Gougian Ln., Gougian Vil., Lukang Township, Changhua County, 50567, Taiwan

Suspension Kit P/N: SSBD1 Standard 151g



- a** Front block: P/N: FSDB1 108 g
- b** Rear block: P/N: RSDB1 43 g
- c** M5 hex bolt
- d** M3 hex bolt x 2
- e** Washers x 2
- f** Special wrench tool



Basic colors



Suspension Kit P/N: SSBD2 Racing 118g



- a** Front block: P/N: FSDB2 63 g
- b** Rear block: P/N: RSDB2 55 g
- c** M5 hex bolt
- d** Spring (in the **b**, don't drop of)
- e** M3 hex bolt
- f** Washers x 2
- g** Special wrench tool x 2



Basic colors



Special colors

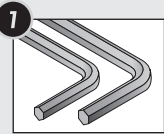


3D Free Ball



RIDEA

Front block installation



Tools required

- 3 mm hex wrench
- 4 mm hex wrench



Unscrew concave joint from the block body.



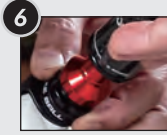
Place a washer **f** in the front fork where the block will be installed.



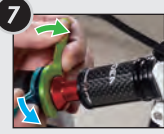
Fix the concave and convex joints to the fork with a 3 mm hex wrench (4 Nm).



Both parts of the joint should be able to rotate after tightening the bolt.



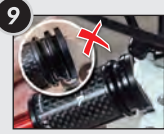
Hand-tighten the body block to the joint.



With the provided special wrench tools **g**, lock the joint by turning concave joint clockwise and convex joint counterclockwise.



Shake the body block to test proper installation. Both parts of the joint should be able to rotate.

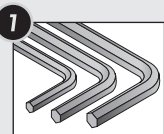


Unfold front wheel to check that there is no gap between the body block and the bike frame.



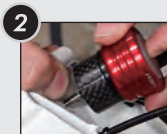
If there is a gap, adjust the position of the suspension base in the frame with a 4 mm hex wrench.

Rear block installation



Tools required

- 2.5 mm hex wrench
- 3 mm hex wrench
- 4 mm hex wrench



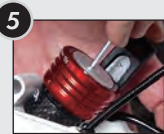
Use M5 bolt **c** to fix rear block to the frame. Tighten by hand during this step.



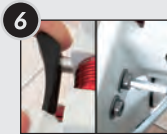
Use 3 mm hex wrench to tighten the rear block (4 Nm).



Insert the M3 bolt **e** into the block and tighten it with a 2,5 mm hex wrench.



M3 bolt max. torque is 2 Nm. This bolt just holds the block in place and it has no function on preloading the shock absorber.



If needed, adjust the swing arm catch until it locks the frame properly. A 4 mm hex wrench will be required.